

Preliminary

# Panasonic

ideas for life

## BL-C10 BL-C30

Network Camera



**BL-C30**  
Wireless Type



*Features and Performance that Meet Your Monitoring Needs*  
**Introducing a Compact Network Camera**



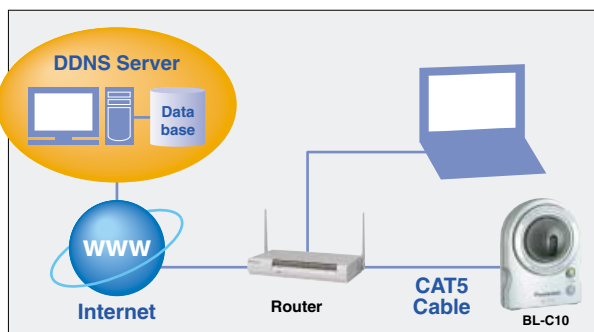
**BL-C10**  
Wired Type

### What is a network camera?

A network camera lets you view real-time images over the Internet\*<sup>1</sup>. In other words, you can monitor your home or office from a distant location using a PC\*<sup>2</sup> or mobile telephone\*<sup>3</sup>. Panasonic's network camera even features a built-in Web server function\*<sup>4</sup>, so the camera does not have to be connected to a PC.

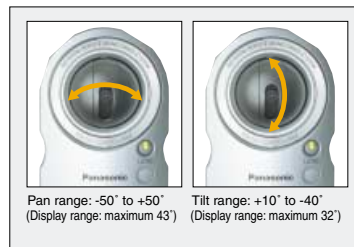
### Just Plug'n Play, Easy Installation

IP address setting, Port Forwarding and DDNS\*<sup>5</sup> will be setup automatically with Setup CD-ROM.



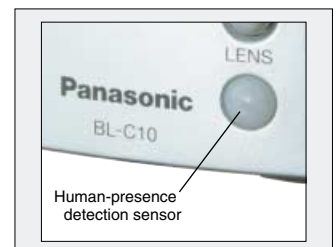
### Compact camera with remote Pan/Tilt control

This ultra-compact camera is only about 36% the overall size of our previous model. The lens can be panned (moved horizontally) or tilted (vertically) from a remote location via a PC or mobile telephone.



### Built-in sensor detects the presence of a person\*<sup>6</sup>

The built-in sensor detects infrared rays emitted from a heat source, such as a person, and sends a signal to begin recording. The camera can also send an e-mail to your computer or mobile phone with captured image attached.



## A wealth of Network Camera control functions

### Pan Scan

You can move the Network Camera in a horizontal direction.

### Tilt Scan

You can move the Network Camera in a vertical direction.

### Remote Pan/Tilt operation

Changing the direction of the Network Camera on a web browser. Pan:  $-50^{\circ}$  to  $+50^{\circ}$ /Tilt:  $+10^{\circ}$  to  $-40^{\circ}$

### Preset Positioning

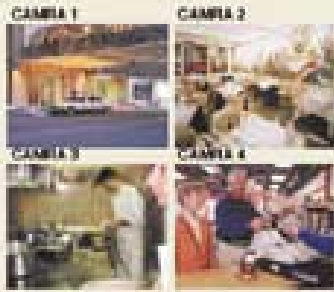
Preset Positioning allows you to change the direction of the camera by one click.

### Click to Center

When you click the certain point on the Single Camera screen, the point is centered on the image.



## Multi-image Display



- View up to 12 cameras simultaneously

## Appearance of BL-C10



## Specifications

	BL-C10	BL-C30
Type:	Indoor Wired	Indoor Wireless
Max. User Access:	20	
Pan:	50° left and right	
Tilt:	+10° up to -40° down	
Max. Pan/Tilt Speed:	Pan: 50 deg/sec, Tilt: 50 deg/sec	
Preset Positioning:	8	
Image Sensor:	CMOS, 1/4 inch	
Number of Pixels:	320,000 pixels	
Horizontal View Angle:	43°	
White Balance:	Auto/Manual	
Focus:	Fixed, 0.5 m ~ Infinity	
Caliber Ratio:	F2.8	
Exposure:	Auto	
Illumination:	1-10,000 lux	
Video Resolution:	640 x 480, 320 x 240 (default), 160 x 120 (mobile access only)	
Video Compression:	JPEG/3 Levels	
Magnification:	100% or 150%	
Frame Rate:	Max. 7.5 frames/sec. (640 x 480) Max. 15 frames/sec. (320 x 240) Max. 15 frames/sec. (160 x 120)	
Authentication:	ID/Password authentication for Administrator and General user (up to 50)	
Trigger of Image Transfer:	Triggered by Built-in sensor alarm and/or timer	
Built in Sensor:	Thermal Sensor Detective Angle: Vertical 30 deg/Horizontal 90 deg Detective Range: Up to about 5 m (16 feet)	
Image Transfer Protocol:	SMTP, FTP	
Message Contents:	Personalized message	
Image Buffer:	about 250 frames (320 x 240, Image Quality=Standard)	
Upgrade:	Via Internet connection	
Max. Bandwidth Control:	0.1/0.2/0.3/0.5/1.0/2.0/3.0/5.0 Mbps/Unlimited	
Network Connection:	Ethernet 10/100 Base-TX	Ethernet 10/100 Base-TX Wireless (IEEE802.11b/g)
Wireless:		
Frequency:	—	2.4000 – 2.4835 GHz
Number of Channel:	—	13
Transmission Speed:	—	54 Mbps
Security:	—	WEP (64/128/152 bit), SSID, TKIP/AES
Mounting:	Wall mount, tripod mount	
Accessories:	AC adaptor and AC cord, Setup CD-ROM	
Weight:	160 g	TBD
Dimensions (H x W x D):	74 mm x 98 mm x 61 mm	TBD
Humidity:	20-80% RH, non-condensing	
Operation Temperature:	5-40°C, indoor only	
Consumption:	4.5W	TBD
Voltage:	AC Adaptor Input: AC 100-240V / Output: 12 VDC	

## \*2 System Requirements For PC Control

Operating System:	Windows®98SE, Windows NT®4.0 or Windows®2000, Windows®XP, Windows®Me
Network Protocol:	HTTP, FTP, TCP, UDP, IP, ARP, ICMP, DHCP, DNS, SMTP, POP3
Web Browser:	Microsoft®Internet Explorer 6.0 or later

\*1 The remote monitoring via the Internet requires static global IP address from your Internet provider. PPPoE connection requires a suitable router. For connecting via the Internet, it is necessary to use functions (port forwarding etc.) such as a router to access the camera from the Internet. Refer to the instructions of the router.

\*2 See system requirement for PC control.

\*3 Can be used only by mobile phones that are equipped with a Web browser and support the JPEG format. Information on compatible models is given on Panasonic Network Camera support web site.

\*4 This function provides HTML documents (for viewing by Web browsers) over networks.

\*5 Panasonic offer free DDNS (Direct Domain Name System) service. You can access the camera through the internet without static global IP address.

\*6 The detection range is 5 meters, 30° in the horizontal direction, and 90° in the vertical direction.

### Note:

- Microsoft®, Windows®, Windows NT® and Windows®Me are either registered trademarks or trademarks of Microsoft Corporation in the United States and/or other countries.
- Windows® is Microsoft® Windows® operating system.
- Windows NT® is Microsoft® Windows NT® operating system.
- All trademarks referred to in this catalog are the property of their respective companies.