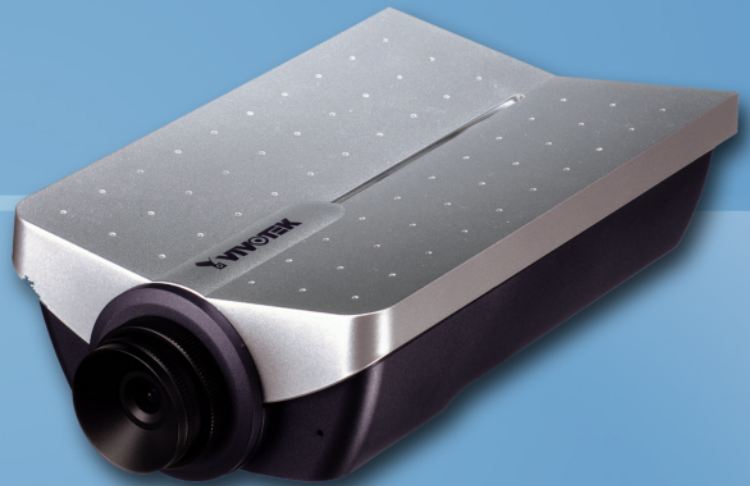




# Mega-Pixel Network Camera



The VIVOTEK IP7138/7139 is a professional network camera equipped with a 1.3 Mega-pixel (1280x1024) CMOS sensor for indoor surveillance applications and detail remote monitoring. Delivering superior image details, it could be the best choice for monitoring extensive areas such as airports, factories, retail stores, schools, offices or banks. Embedded with VIVOTEK VVTK-1000 SoC, it enables to deliver dual streams with different resolutions and video quality upon different devices simultaneously such as PC (MPEG-4 or MJPEG), or 3G cell phone (MPEG-4 only). Supporting 3GPP mobile surveillance, it enables users to monitor via 3G cell phones on the go. More features are enhanced in the VIVOTEK IP7138/7139 to meet specific applications such as compact flash card slot for local storage, digital I/O interface, built-in 802.3af compliant PoE (IP7138), 802.11b/g WLAN (IP7139), and appropriate lens selection with CS mount. With its versatile functions, the VIVOTEK IP7138 provides a total solution for customers' diverse needs.



IP7138 / IP7139

## Features

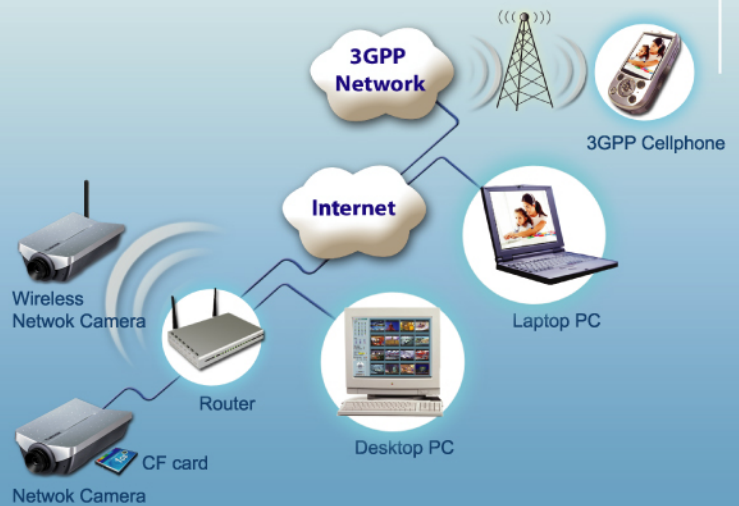
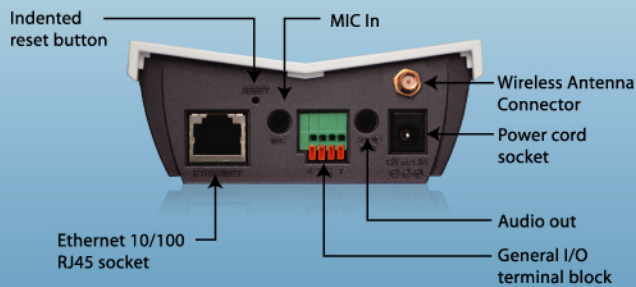
- Mega-pixel CMOS Sensor
- Appropriate Lens Selection with CS Mount
- Built-in CF Card Slot for Local Storage
- MPEG-4 and MJPEG Video Compression (Dual Codec)
- Supports Simultaneous Dual Streams (RTSP Streaming for MPEG-4 Mode with Resolution up to 800x600; Server Push for MJPEG Mode with Resolution up to 1280x1024)
- Supports 3GPP Mobile Surveillance
- Supports Two-way Audio (\*)
- Built-in 802.3af Compliant PoE (Power over Ethernet) (IP7139)
- Built-in 802.11b/g WLAN (IP7139)
- One D/I and One D/O for Sensor and Alarm
- Supports Privacy Masks

The features with (\*) will be available later through firmware upgrade.

# Mega-Pixel Network Camera

IP7138 / IP7139

## Rear Panel



## Technical Specifications

Models	<ul style="list-style-type: none"> <li>IP7138 (Built-in PoE)</li> <li>IP7139 (Built-in WLAN)</li> </ul>	Event Management	<ul style="list-style-type: none"> <li>Multiple-window video motion detection</li> <li>1 digital input and 1 digital output</li> <li>Event notification using HTTP,SMTP,or FTP</li> </ul>
System	<ul style="list-style-type: none"> <li>CPU: VVTK-1000 SoC</li> <li>Flash: 8MB</li> <li>RAM: 64MB</li> <li>Lens: CS mount, 4mm, F2.0</li> <li>Image Sensor: 1.3M-Pixel CMOS</li> <li>Embedded OS: Linux 2.4</li> </ul>	Security	<ul style="list-style-type: none"> <li>Multi-level user access</li> <li>IP address filtering</li> </ul>
Video	<ul style="list-style-type: none"> <li>Motion JPEG video with resolution up to 1280x1024</li> <li>MPEG-4 video with resolution up to 800x600</li> <li>Frame rates: 1280x1024 &amp; 800x600 up to 7.5fps 640x480 up to 30fps</li> </ul>	Dimensions	<ul style="list-style-type: none"> <li>Length: 126.4 mm</li> <li>Width: 96.2 mm</li> <li>Height: 47.4 mm</li> </ul>
Audio	<ul style="list-style-type: none"> <li>GSM-AMR speech compression</li> <li>2-way audio with audio mute</li> <li>Bit rate: 4.75Kbps to 12Kbps</li> </ul>	Weight	<ul style="list-style-type: none"> <li>Net: 276g (IP7138)</li> <li>Net: 292g (IP7139)</li> </ul>
Streaming	<ul style="list-style-type: none"> <li>Simultaneously dual-streaming</li> <li>MPEG-4 streaming over UDP, TCP, or HTTP</li> <li>MPEG-4 multicast streaming</li> <li>M-JPEG streaming over HTTP</li> </ul>	LED Indicator	<ul style="list-style-type: none"> <li>Bi-color LED system status indicator</li> </ul>
Local Storage	<ul style="list-style-type: none"> <li>Compact Flash card slot</li> <li>Stores snapshots and video clips</li> </ul>	Power	<ul style="list-style-type: none"> <li>12VDC</li> <li>Power over Ethernet: 802.3af compliant</li> </ul>
Networking	<ul style="list-style-type: none"> <li>10/100 Mbps Ethernet, RJ-45</li> <li>802.11b/g wireless LAN (IP7139)</li> <li>Protocols: TCP/IP, HTTP, UPnP, RTSP/RTP/RTCP, IGMP, SMTP, FTP, DHCP, NTP, DNS, DDNS, and PPPoE</li> </ul>	Application	<ul style="list-style-type: none"> <li>Installation wizard</li> <li>16-ch recording software</li> <li>SDK available for application development and system integration</li> </ul>
		EMI & Safety	<ul style="list-style-type: none"> <li>CE, FCC, PSE, VCCI</li> </ul>
		Viewing System Requirements	<ul style="list-style-type: none"> <li>OS: Microsoft Windows 2000/XP</li> <li>Browser: Internet Explorer 5.x or above</li> <li>Cellphone: 3GPP player</li> <li>Real Player 10.5</li> <li>Quick Time 6.5</li> <li>Packet Video Player 3.0</li> </ul>

All specifications are subject to change without notice.  
All other trademarks are owned by their respective companies.



6F, No.192, Lien-Cheng Rd., Chung-Ho, Taipei County, Taiwan  
Tel: +886 2 82455282  
Fax: +886 2 8245532  
E-mail: sales@vivotek.com  
Http://www.vivotek.com